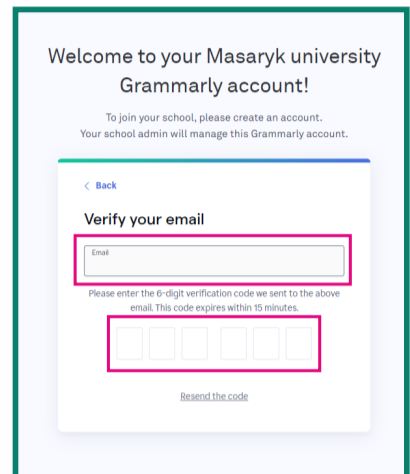
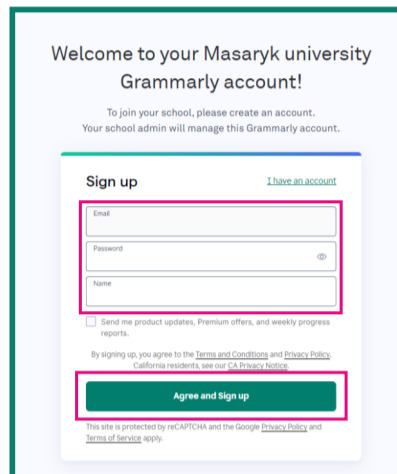
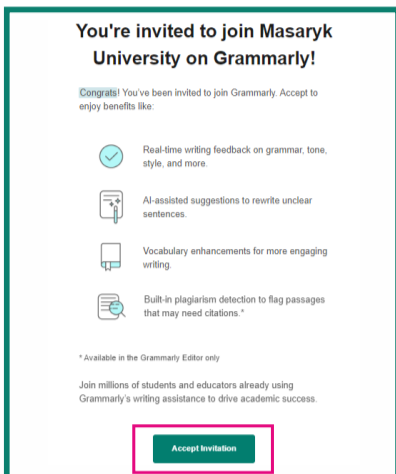
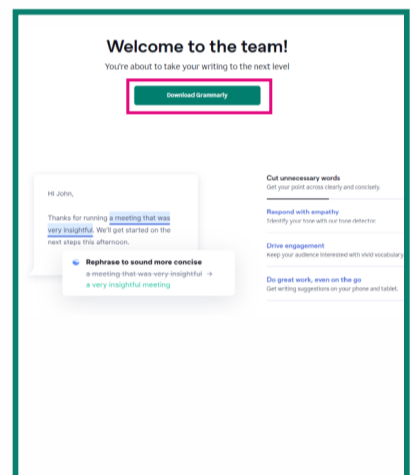
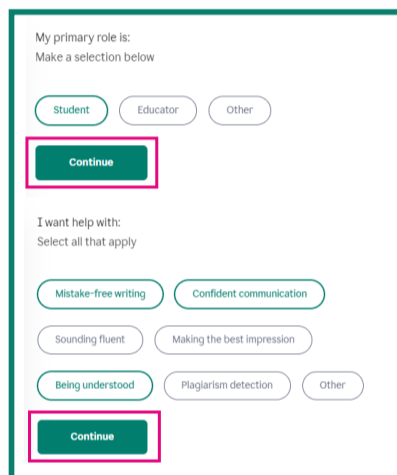
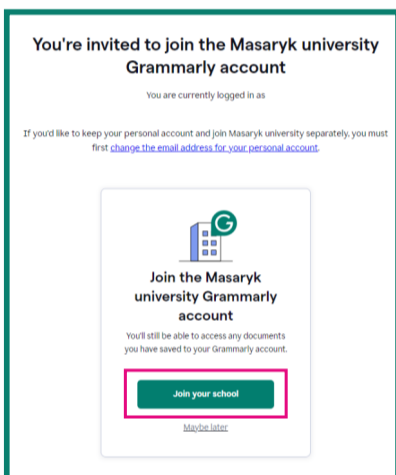


How to use Grammarly Pro

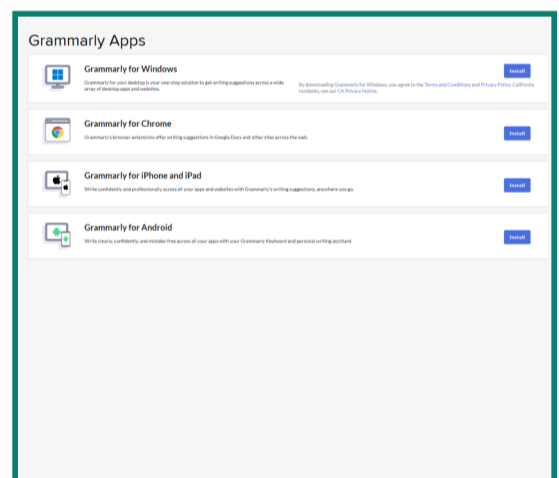
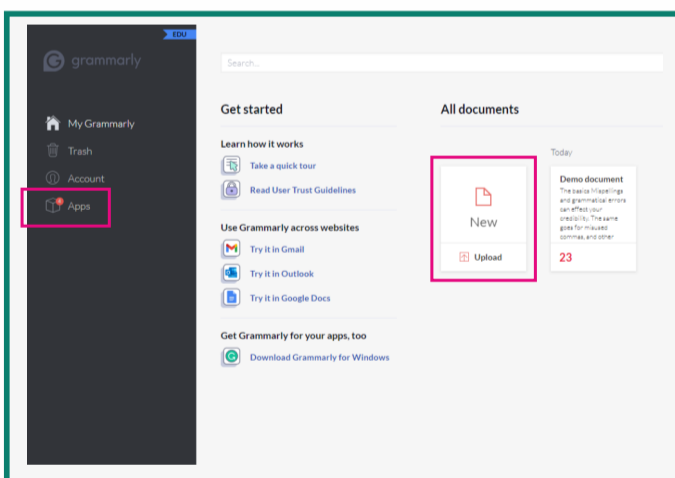
After receiving an invitation letter, set up your login: use your university e-mail address and your own password.



To complete your Grammarly account, select options from the preset parameters.



Now, your Grammarly account is activated. Go to **Apps** to see the installation packages menu.



You can also write and edit text directly in the online Grammarly editor without installation. Just log in to your Grammarly account at: <https://www.grammarly.com/signin> and click on **New**. The writing assistant will automatically open on the right side of the screen.

