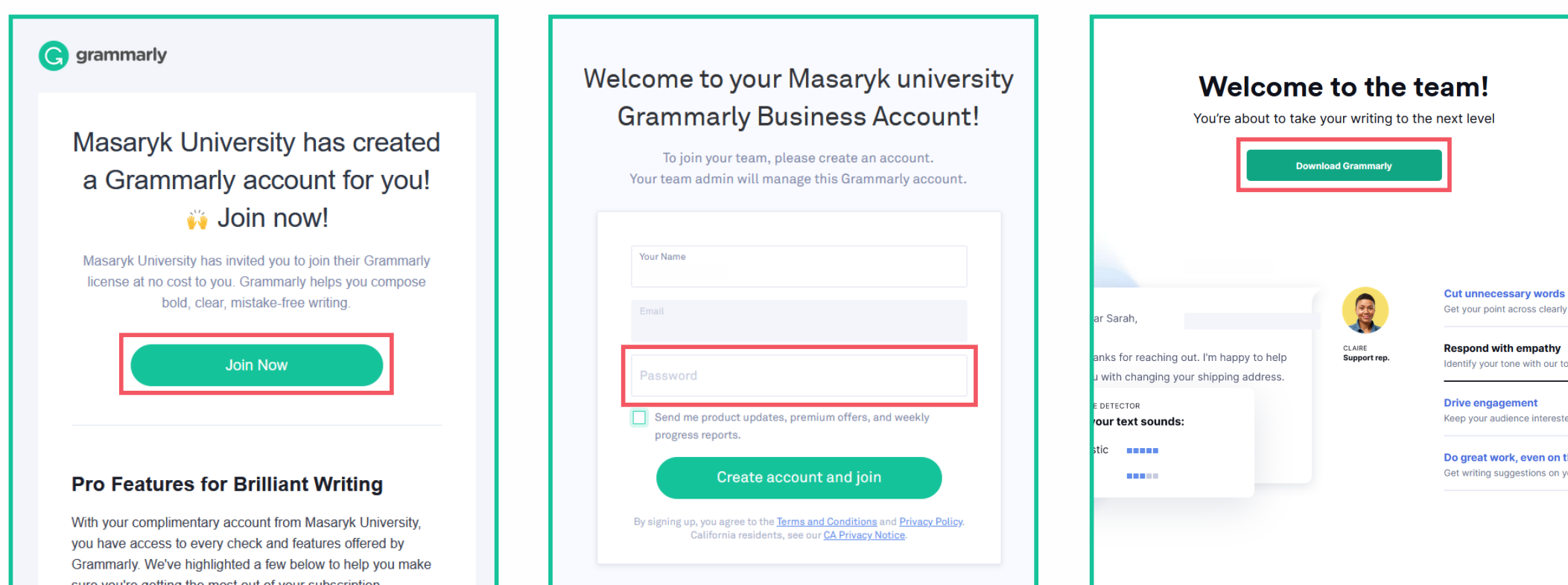
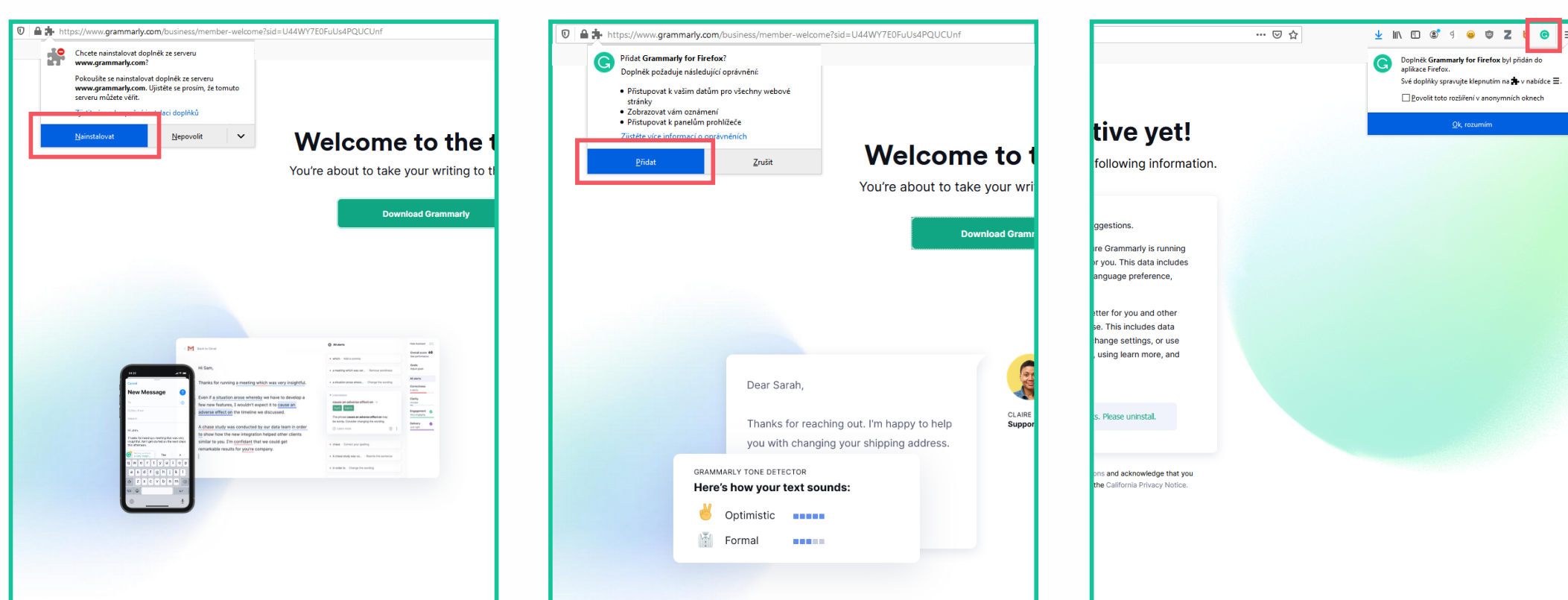


# How to install grammarly

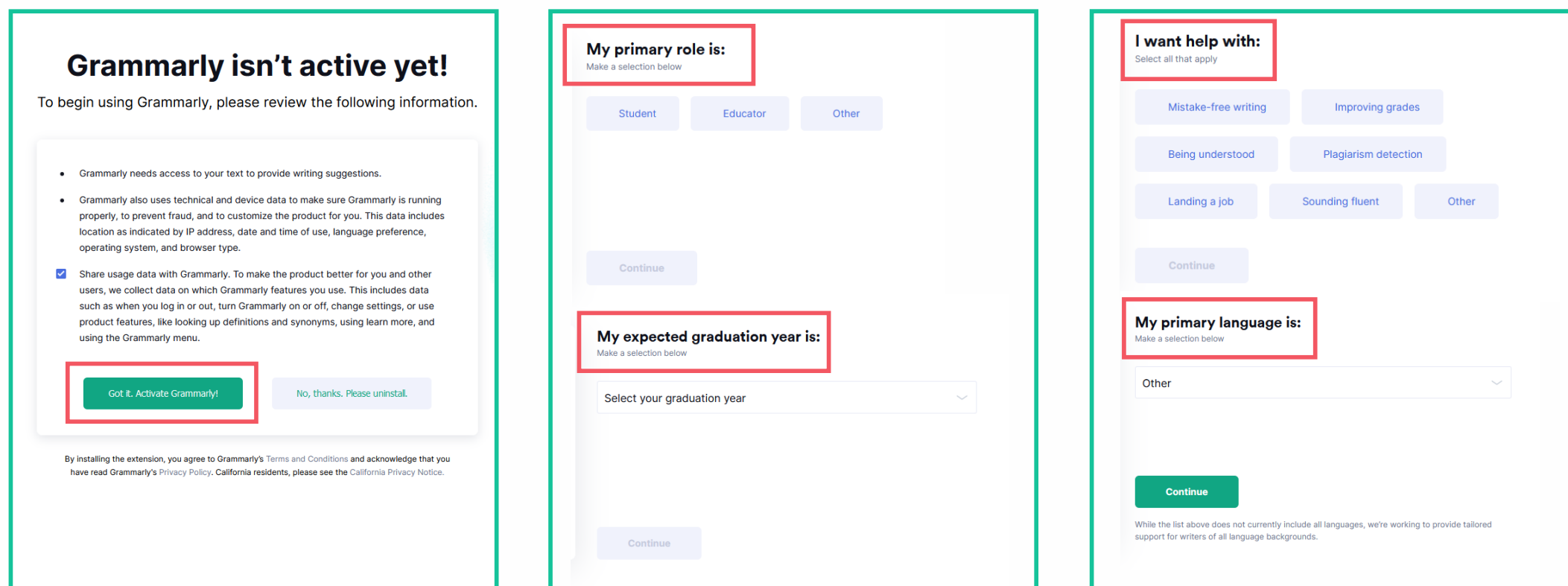
In the invitation letter, click on Join Now. Set your password and choose Download Grammarly.



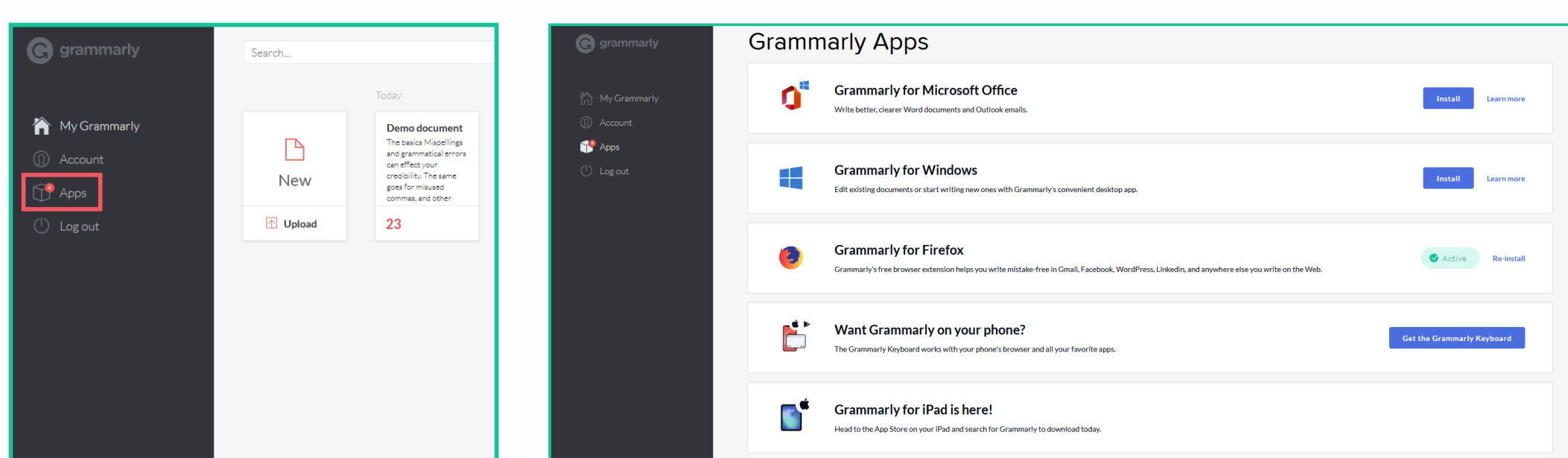
You can also add Grammarly into your browser.



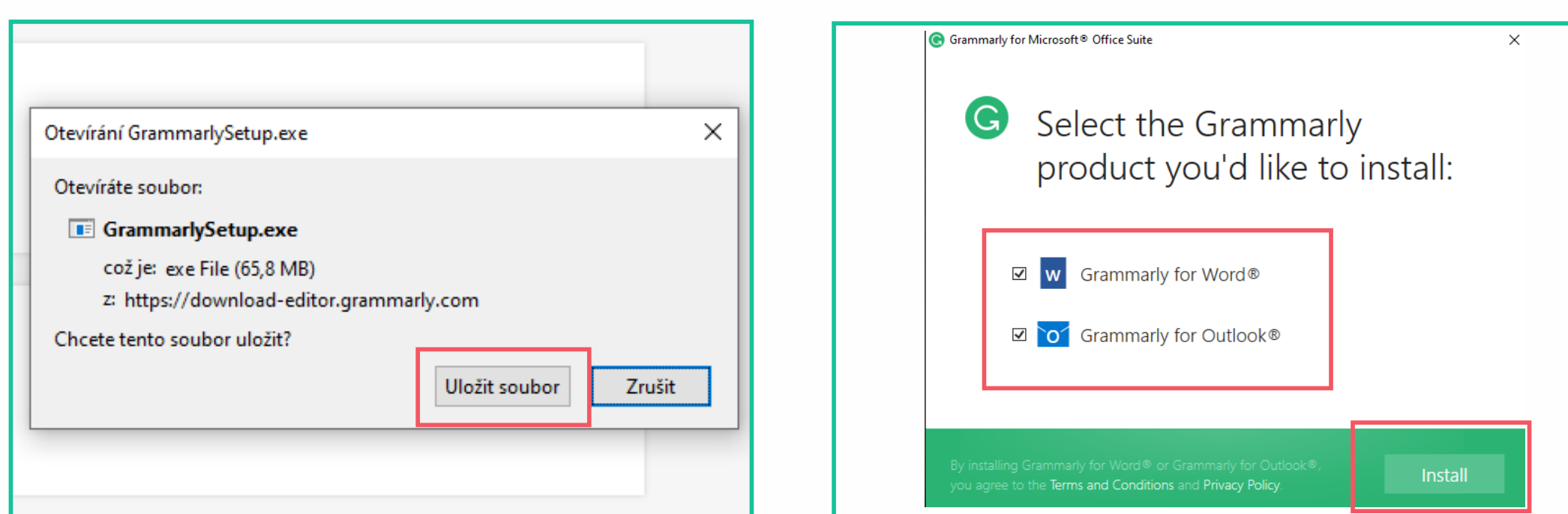
To activate your Grammarly account, click on Got it. Activate Grammarly! and finish the following four selections.



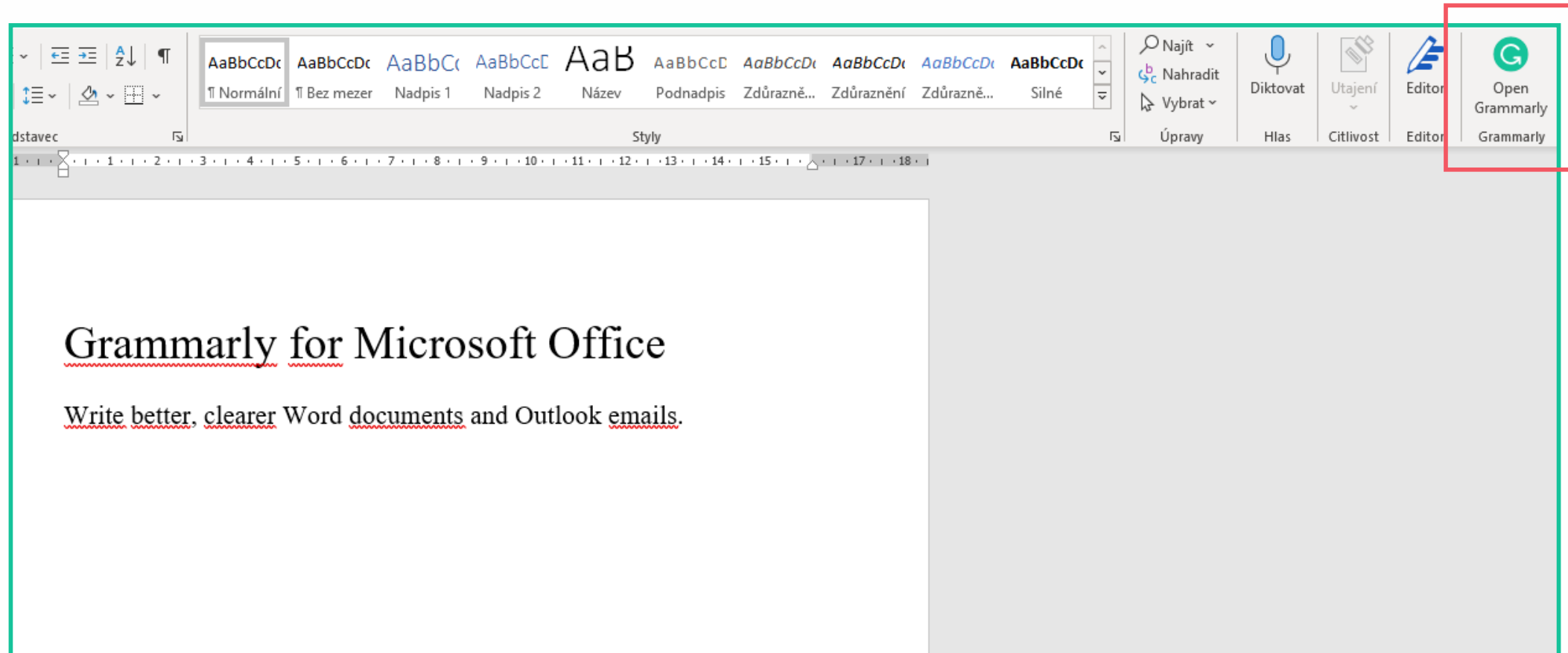
Now you are in your Grammarly account. Click on Apps to view all available applications.



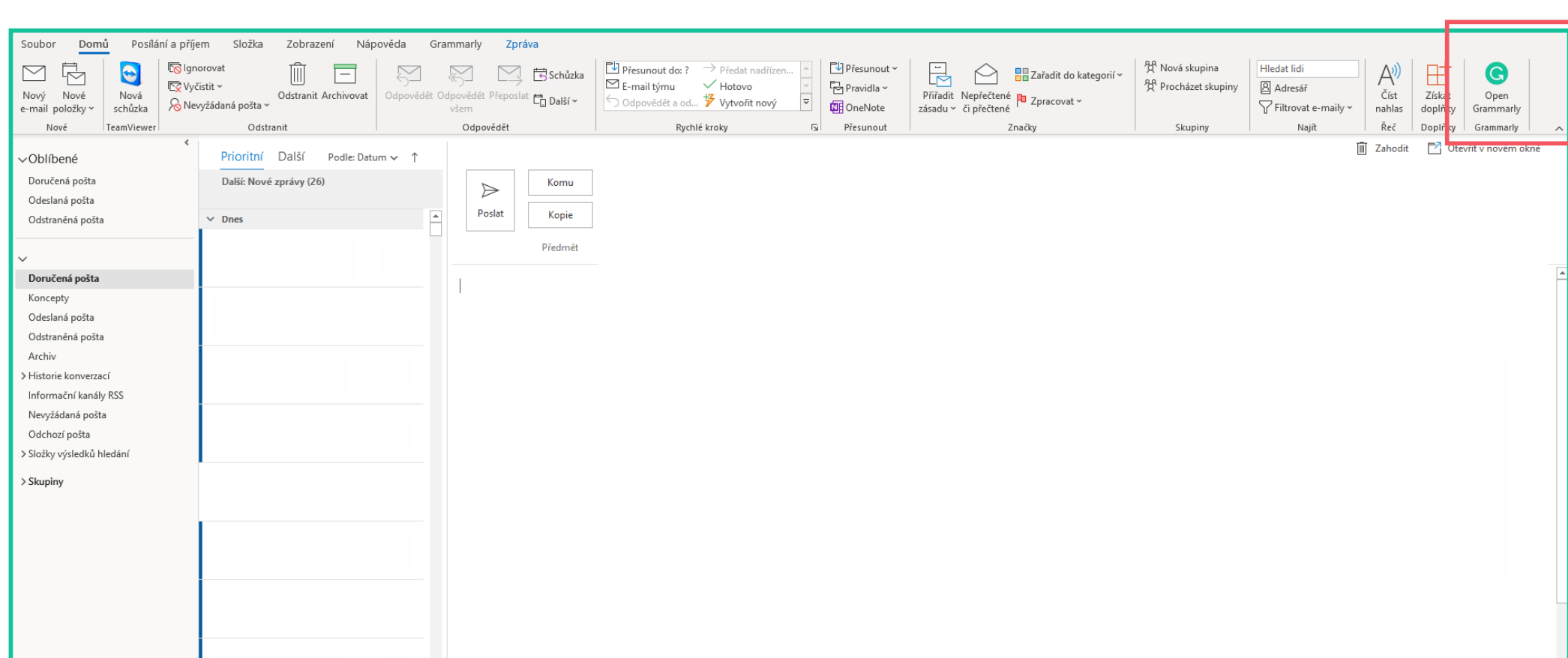
To install Grammarly for Microsoft, click on Install. You can also choose Grammarly for Outlook here.



After log-in to your Grammarly account, open MS Word and you will find Grammarly in the top menu bar. Click on the Grammarly button to activate it.



Have you installed Grammarly for MS Outlook too? Then go to your email and activate Grammarly by clicking on the Grammarly button in the top menu bar.



It is possible to write and edit texts directly in the online editor without any installation. Just go to Grammarly <https://app.grammarly.com/> and log in. Start writing the text, and the editor will run automatically on the right side.

